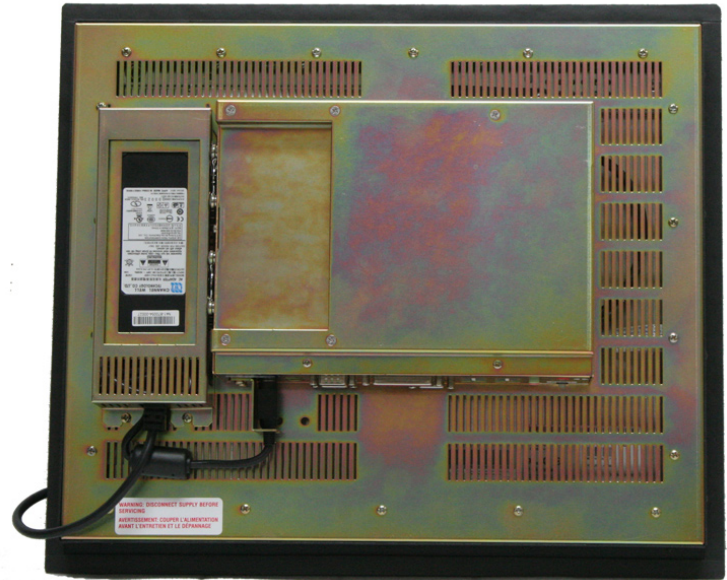
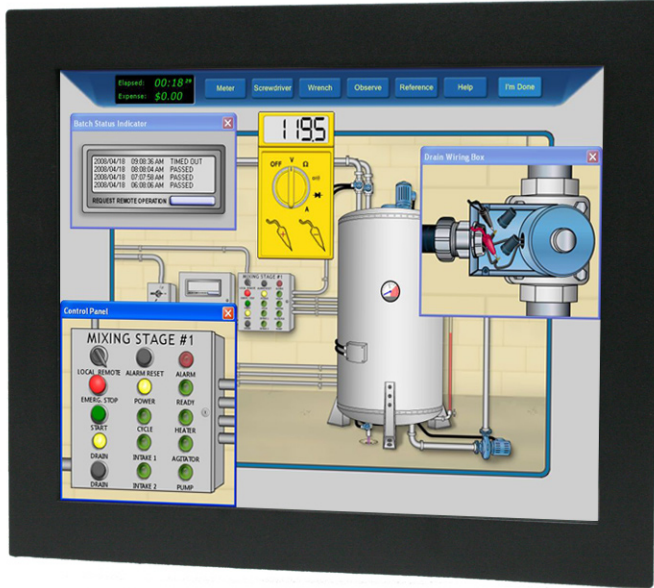


Transduction

TR-LCD1900-ITX-W11

Intel 11th Generation, 4-Core Pentium

TR-LCD1900-ITX-W11 Industrial Panel/Rack PC w/ 19" LCD



Features

- Computing power with Intel 11th generation 4-core Pentium N6415 processor.
- Intel Elkhart Lake chipset.
- 2 x DDR4 SO-DIMM 3200MHz DIMM sockets, supports up to 32GB non-ECC memory.
- 19" industrial quality AUO LCD with 1280 x 1024 resolution.
- Enclosure made of zinc plated steel coated with tough baked epoxy finish.
- Panel mount version has NEMA 4 rating with hose proof front panel seals.
- External 4K graphics on 1x DisplayPort and 1 x HDMI ports.
- 0 ~ 50°C (32 ~ 122°F) operating temperature with full software load, 60°C (140°F) for 2 hours.
- Multiple I/O functions: 4 x USB2.0 ports, 2 x USB3.1 ports, 2 x RS232 ports, 1 x RS232/422/485 port, 2 x I211-AT LAN ports and 1 x audio (Mic-in & Line-out).
- High speed SATA III MLC or SLC SSD up to 512GB.
- Universal AC/DC 100W power supply.
- Manufactured by Transduction.
- Warranty 3 years with telephone service support for life.

TRANSDUCTION INC.

1.800.268.0427 905.625.1907 Fax: 905.625.0531

www.transduction.com Email: sales@transduction.com

Transduction

Intel 11th Generation, 4-Core Pentium

TR-LCD1900-ITX-W11

Specifications

Model

- TR-LCD1900-ITX-W11 NEMA 4 industrial panel or rack mount computer with 19" LCD.

Processor

- 11th Generation Intel Pentium N6415 4-core, burst 3.0Ghz.

Chipset

- Intel Elkhart Lake

BIOS

- AMI BIOS, ACPI supported

LCD Display

- Resolution - 1280 x 1024 (SXGA)
- Contrast ratio - 1000:1
- Brightness - 250cd/m2
- LED Backlight MTBF < 50,000 hours
- USB Resistive touch screen or safety glass

Memory

- 2 x DDR4 SO-DIMM 3200MHz upto 32GB

LAN

- 2 x Intel I211-AT Gigabit LAN

Graphics

- Intel® HD Graphics., external 4K on 1 x DisplayPort or 1 x HDMI port
- Dual independent display support

Real Time Clock

- Lithium battery backup

Optical Drive

- Optional SLIM CD/DVD-R/W

Storage

- SATA III MLC or SLC SSD, up to 600mb/sec with Power Guard to prevent bad blocks at loss of power

I/O Chipset

- Nuvoton NCT6126D (eSPI)

TPM

- Optional TPM2.0 security module

I/O Ports

- 1 x HDMI, 1 x DisplayPort, 4 x USB2.0 ports, 2 x USB3.1 ports, 2 x LAN, 2 x RS232 ports, 1 x RS232/422/485 port, 1 x Line OUT/ Mic-IN

Watch-Dog Timer

- Generates system reset: 255 levels

Weight/Dimensions

- Weight - 13kg (29 lbs)
- Dimensions - 15.250" (D) x 17.750" (W) x 3.995" (H) (4.625" with CD/DVD)

Operating Temperature

- 0 ~ 50°C (32 ~ 122°F), 60°C (140°F) for 2 hours

Operating Humidity

- Relative humidity 10 ~ 95%, non-condensing

Storage Temperature

- -40 ~ 85°C (-40 ~ 185°F)

Storage Humidity

- Relative humidity 10 - 45%, non-condensing

Power

- Universal AC/DC 100W power supply
- Power consumption - 55W
- Optional DC power - 12, 24, 48, 125 and 250VDC

Shock & Vibration

- 25G and 5G

Applicable QA Standard

- ISO 9001:2015
- Safely packaged to standard ASTM-D3951

Warranty: 3 years

Compatible with Windows 11, Windows 10 and Ubuntu LINUX kernel 5.0 or lower

Electrical Safety Approval, CE and FCC Class A

Additional Options

- PM (panel mount) or RM (rack mount)
- SLIM CD/VD-R/W
- Bluetooth
- TPM2.0 security module
- Wi-Fi+
- Safety glass in place of touch screen
- 12, 24, 48, 125 or 250VDC input power

TR-LCD1900-ITX-W11 Industrial Panel/Rack PC w/ 19" LCD

TRANSDUCTION INC.

1.800.268.0427 905.625.1907 Fax: 905.625.0531

www.transduction.com Email: sales@transduction.com