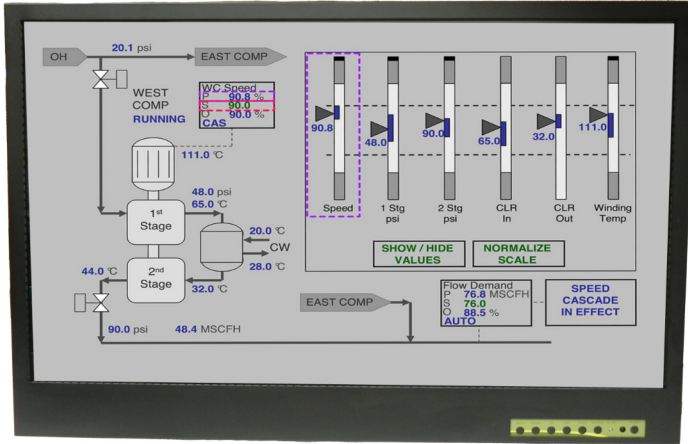


Transduction

Panel Mount/VESA Mount Monitor

TR-LCD3200-PM

TR-LCD3200-PM 31.5" 4K UHD Industrial LCD Monitor



Features

- 31.5" industrial quality UHD LCD with resolution 3840 x 2160.
- Projected USB Capacitive 10-point touch screen
- No need for video drivers.
- 31.5" viewable area. Aspect ratio 16:9.
- Brightness 400cd/m².
- Contrast ratio 2000:1.
- Viewing angle - Vertical = 178°, Horizontal = 178°.
- Response time 14ms.
- Pixel pitch 0.18159mm.
- Front OSD control buttons.
- Daisy-chain function for video wall with multiple displays
- 9-36VDC input power comes as standard configuration.
- Optional 89-250VAC/111-360VDC input power.
- Optional 85-264VAC/80-370VDC input power.
- Optional 18-72VDC input power.
- Operating temperature 0 ~ 50°C (32 ~ 122°F), 60°C (140°F) for 2 hours.
- Warranty 5 years with telephone service support for life.
- Standard stock product at Transduction.

TR-LCD3200-PM

TR-LCD3200-PM 31.5" 4K UHD Industrial LCD Monitor

Specification

Model

- TR-LCD3200-PM UHD 31.5" LCD industrial monitor.

LCD Module

- Viewable image size - 31.5" UHD
- Aspect ratio 16:9
- Resolution - 3840 x 2160
- Pixel pitch - 0.18159mm
- Brightness - 400cd/m²
- Contrast - 2000:1
- Response time - 14ms (grey to grey)

Touch Screen

- Capacitive
- Interface - USB
- Touch Points - 10
- Compatible with QNX RTOS V6.3 to V6.6, Mac OS, Mac OS X, Linux Kernel 2.6.24 and later, Windows Embedded, CE.net/5.0/6.0/7.0, Vista, XP, 2000, Win 7, Win 8, Win 10 and Win 11.

Input Signal

- DisplayPort
- 2 x HDMI

Display Colors

- Digital input 1.07 billion, 10-bit

Viewing Angle

- Vertical - 178°
- Horizontal - 178°

Synchronization Range

- Horizontal - 30KHz to 60KHz
- Vertical - 56Hz to 75Hz
- No need for video drivers
- Front OSD commands

Resolution

- HDMI/DisplayPort - VGA/SVGA/XGA/SXGA/WXGA/WXSGA/WXSGA+/UXGA/HD 1080/WUXGA/WQXGA/QHD 3840 x 2160 @ 60Hz max.

Active Display Area

- Vertical - 392.2344mm
- Horizontal - 697.3056mm

Power Supply

- DC power input: 9-36VDC (standard configuration)
- Optional power input: 17-72VDC
- Optional power input: 89-264VAC/111-370VDC
- Optional power input: 85-264VAC/80-370VDC

Power Efficiency

- 80% minimum at full load

Operating Temperature

- 0 ~ 50°C (32 ~ 122°F), 60°C (140°F) for 2 hours

Operating Humidity

- Relative humidity 10 ~ 90%, non-condensing

Altitude

- 0 - 10,000ft

Storage Temperature

- -20 ~ 60°C (-4 ~ 140°F)

Storage Humidity

- Relative humidity 10 ~ 90%, non-condensing

Storage Altitude

- 0 - 30,000ft

Dimensions

- Approximately 77.3cm (W) x 46.9cm (H) x 6.68cm (D)
(30.43" (W) x 18.46" (H) x 2.63" (D))

Weight

- 15kg (33.06lbs)

Vibration & Shock

- 7.5G and 50G

Compliance: IEEE Class 1E, FCC Class B, CE, UL
(Qualification available upon request at additional cost)

Additional Options

- 18-72VDC input power
- 89-264VAC/111-370VDC input power
- 85-264VAC/80-370VDC input power

Warranty: 5 years

Ordering

- TR-LCD3200-PM - Panel mount version