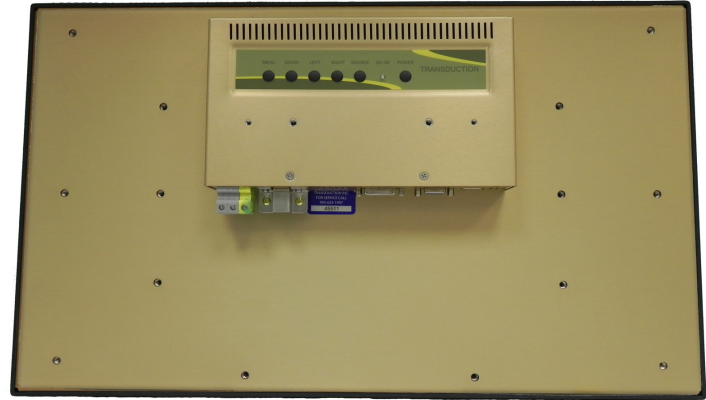
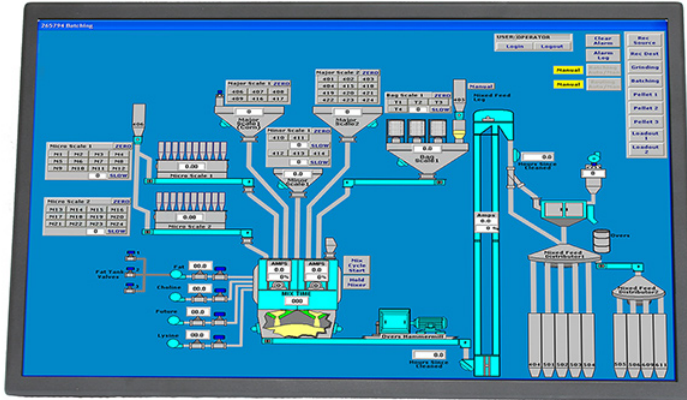


Transduction

Panel, VESA or Door Mount Monitor

TR-LCD2300W-V2

TR-LCD2300W-V2 23" Wid Screen Industrial LCD Monitor



Features

- Wide screen 23" industrial quality LCD and optional touch screen with resolution 1920 x 1280.
- Compliant with US Atomic Energy Commission IEEE Class 1E equipment standard for use in nuclear power plants.
- Available in panel (PM), VESA (VM) or Door (DM) versions.
- No need for video drivers.
- 23" viewable area. Aspect ratio 16:9.
- Brightness 250cd/m².
- Contrast ratio 1000:1.
- Viewing angle - Vertical = 89°, Horizontal = 89°.
- Response time 14ms.
- Pixel pitch 0.2652mm.
- Rear OSD control buttons.
- 89-250VAC input power or 111-360VDC input power.
- Operating temperature 0 ~ 50°C (32 ~ 122°F), 60°C (140°F) for 2 hours.
- Warranty 5 years with telephone service support for life.
- Standard stock product at Transduction.

TR-LCD2300W-V2

TR-LCD2300W-V2 23" Wid Screen Industrial LCD Monitor

Specification

Model

- TR-LCD2300W-V2 wide screen 23" LCD industrial monitor.

LCD Module

- Viewable image size - 23" wide screen. Aspect ratio 16:9
- Resolution - 1920 x 1280
- Pixel pitch - 0.2652mm
- Brightness - 250cd/m²
- Contrast - 1000:1
- Response time - 14ms (grey to grey)

Input Signal

- SVGA Analog RGB
- DisplayPort
- Dual-link DVI-D

Display Colors

- Analog input 16.7M

Viewing Angle

- Vertical - 89°
- Horizontal - 89°

Synchronization Range

- Horizontal - 54.2KHz to 83.8KHz
- Vertical - 49Hz to 75Hz
- No need for video drivers
- Rear OSD commands

Resolution

- Analog RGB/DVI-D/DisplayPort - VGA/SVGA/XGA/SXGA/WXGA/WXSGA/WUXGA 1920 x 1080 @ 83Hz max.

Active Display Area

- Vertical - 286.41mm
- Horizontal - 509.18mm

Power Supply

- AC power input: 89-250VAC 50/60Hz
- DC power input: 111-360VDC
- Input current: 2.1A max.
- Output: 12VDC +/-0.1V /8.0A max., 100W

Power Efficiency

- 80% minimum at full load

Operating Temperature

- 0 ~ 50°C (32 ~ 122°F), 60°C (140°F) for 2 hours

Operating Humidity

- Relative humidity 10 ~ 90%, non-condensing

Altitude

- 0 - 10,000ft

Storage Temperature

- -20 ~ 60°C (-4 ~ 140°F)

Storage Humidity

- Relative humidity 10 ~ 90%, non-condensing

Storage Altitude

- 0 - 30,000ft

Dimensions

- 54.10cm (W) x 32.00cm (H) x 6.68cm (D) (21.30" (W) x 12.60" (H) x 2.63" (D))

Weight

- 6.5kg (14.33lbs)
- 7.0kg (15.43lbs) with VESA bracket (optional)

Vibration & Shock

- 7.5G and 50G

Compliance: IEEE Class 1E, FCC Class B, CE, UL
(Qualification reports available upon request)

Additional Options

- Bracket for VESA mounting
- USB resistive Touch Screen
- Safety Glass

Warranty: 5 years

Ordering

- TR-LCD2300W-V2-PM - Panel mount version
- TR-LCD2300W-V2-VM - VESA mount version
- TR-LCD2300W-V2-DM - Door Mount version